

Local and Non-Local Relaxation Dynamics of Hot Electrons in Au/Fe/MgO(001) thin films

Y. Beyazit¹, J. Beckord¹, J. Thomas¹, P. Zhou¹, J. Meyburg², D. Diesing², M. Ligges¹, U. Bovensiepen¹

¹Faculty of Physics, University of Duisburg-Essen, 47057 Duisburg, Germany

²Faculty of Chemistry, University of Duisburg-Essen, 45141 Essen, Germany

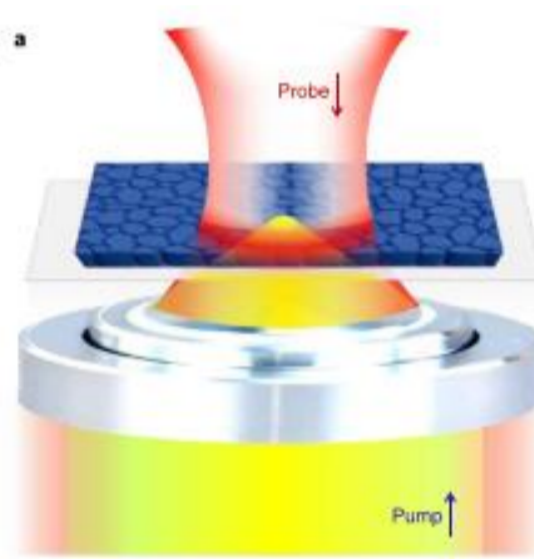
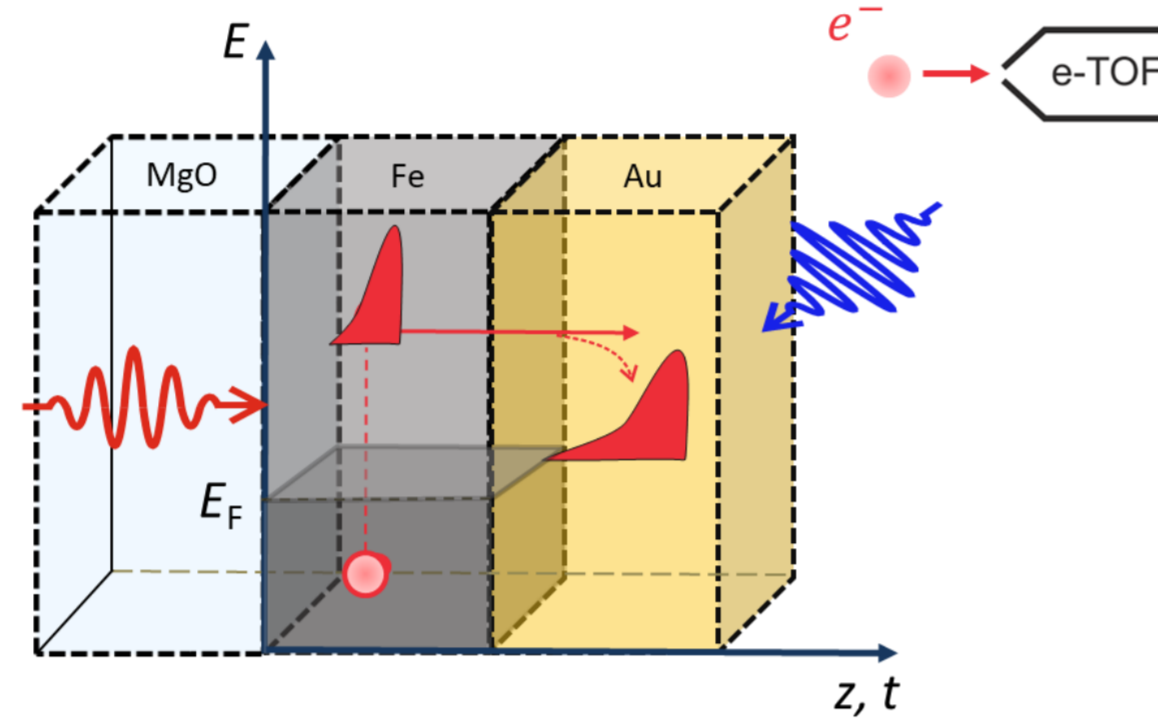
Abstract

Employing femtosecond laser pulses in front and back side pumping of Au/Fe/MgO(001) combined with detection in two-photon photoelectron emission spectroscopy, we analyze local relaxation dynamics of excited electrons in buried Fe, injection into Au across the Fe-Au interface, and electron transport across the Au layer at 0.6 to 2.0 eV above the Fermi energy. By analysis as a function of Au film thickness we obtain the electron lifetimes of bulk Au and Fe and distinguish the relaxation in the heterostructures constituents. We also show that the excited electrons propagate through Au in a superdiffusive regime and conclude further that electron injection across the epitaxial interface proceeds ballistically by electron wave packet propagation.

Electron dynamics in buried media as a function of energy

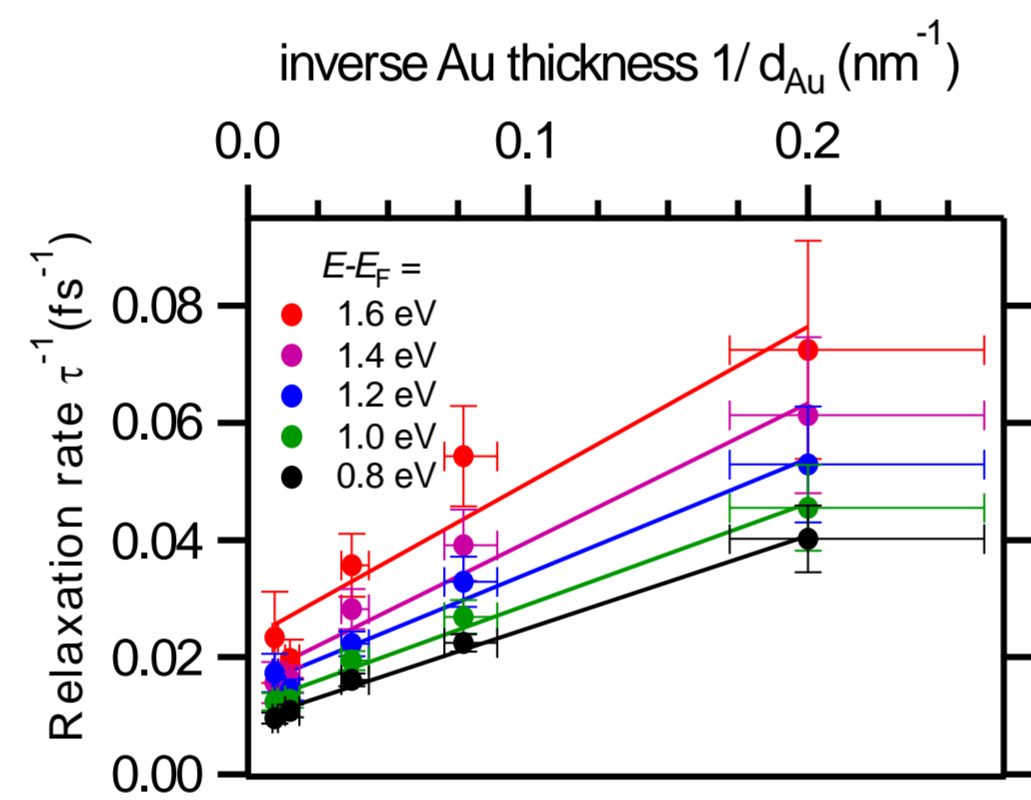
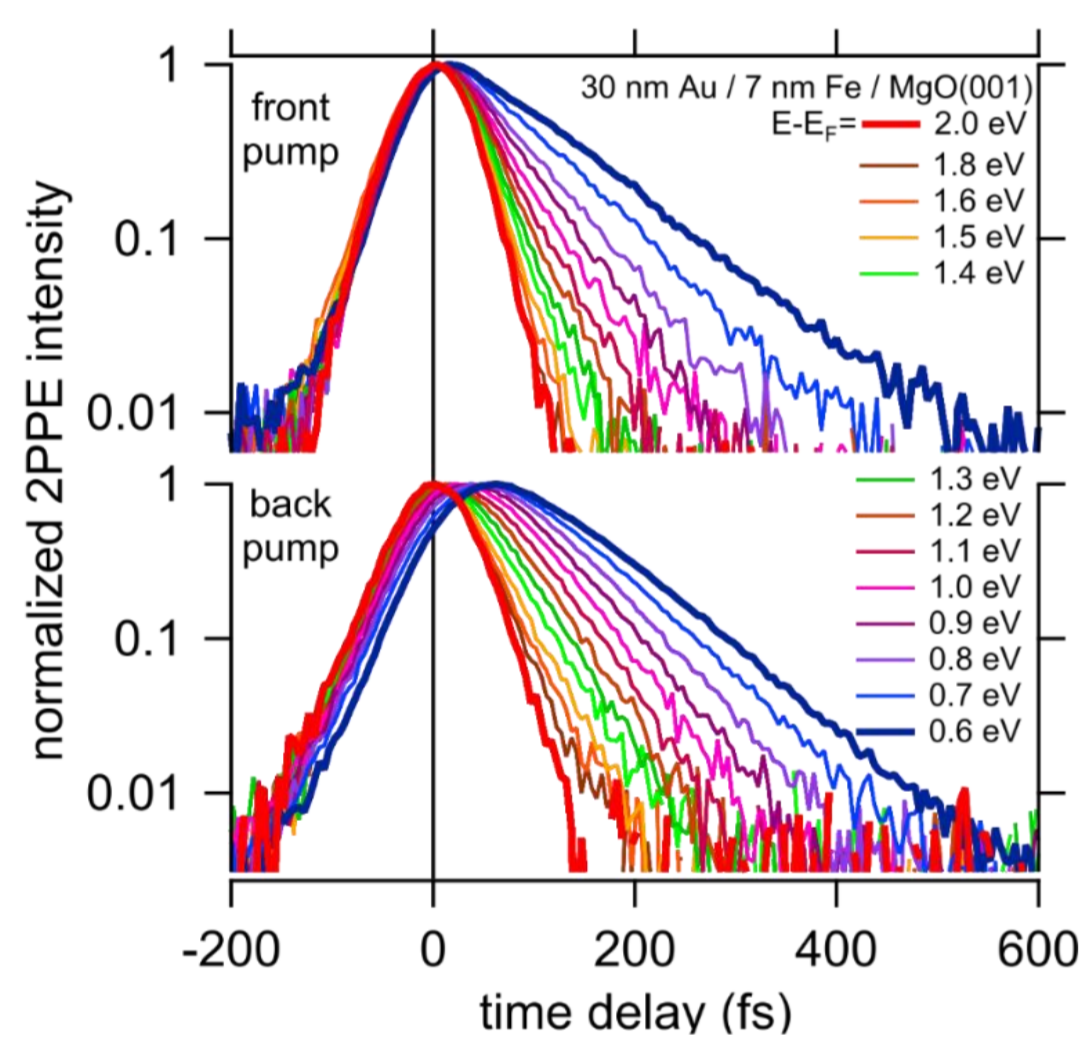
By using a **back-pump/ front-probe** tr-photoemission technique the photoexcited hot electrons exhibit local and non-local dynamics, which leads to **relaxation and transport** processes.

- interplay among relaxation and transport processes of hot electrons
 - energy E , space z and time t
 - dynamics in buried media and interfaces



- fs-TAM on $\text{MAPI}_{3-x}\text{Cl}_x$ perovskite
 - analysis of spatiotemporal dynamics of carriers
 - missing energy E information

J. Sung et al., Nature Phys. 16, 171 (2020)

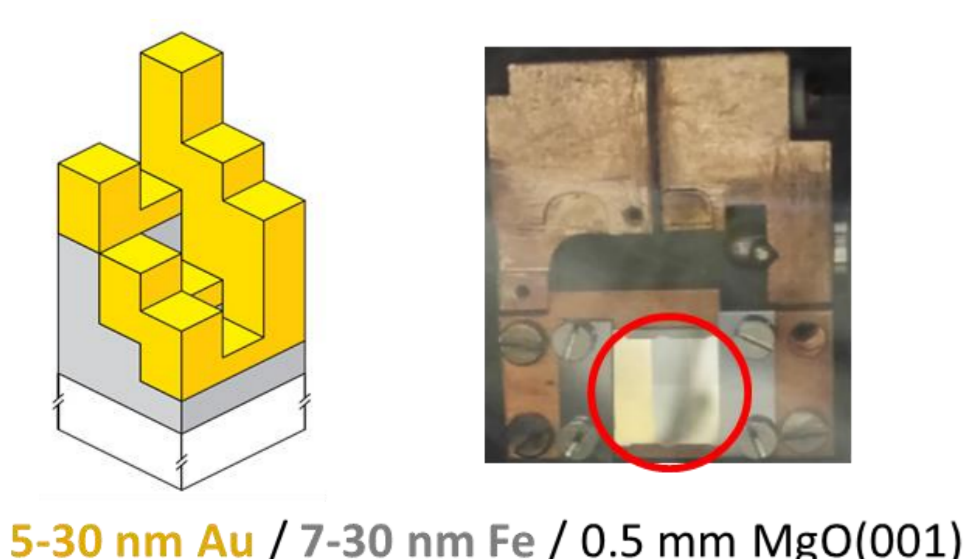
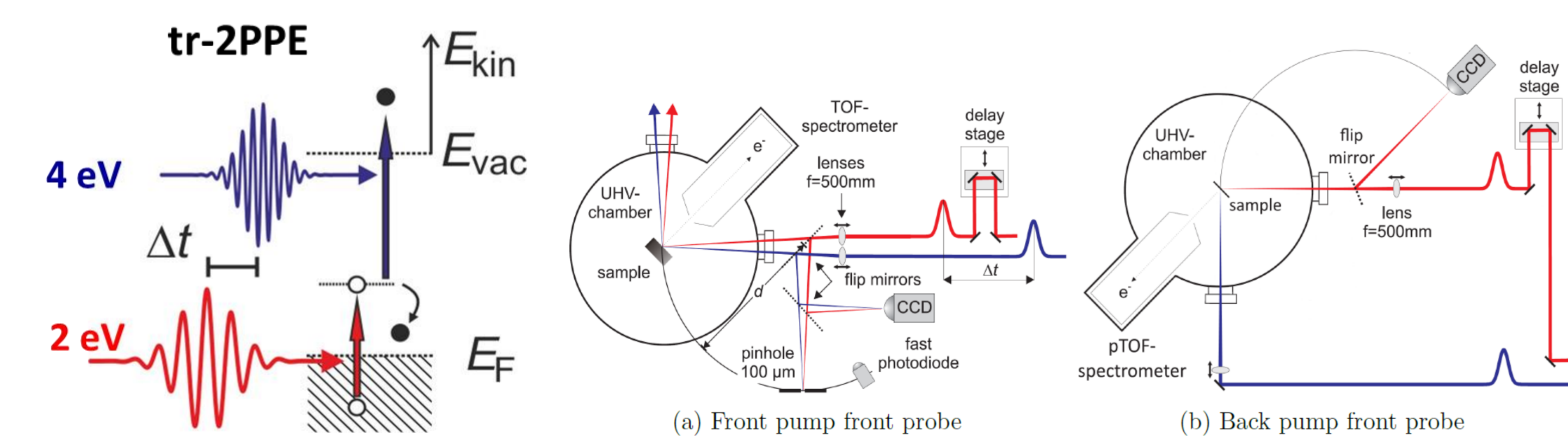


$$\tau^{-1}(d_{\text{Au}}) = \tau_{\text{Au}}^{-1} + \tau_{\text{Fe}}^{-1} = A + \frac{B}{d_{\text{Au}}}$$

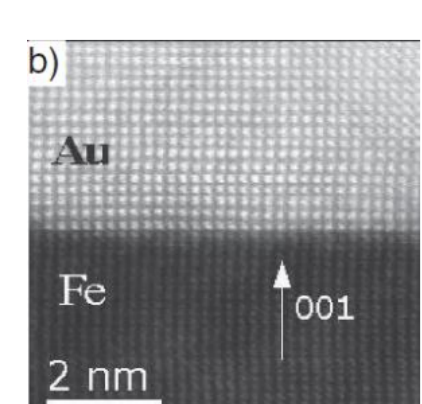
- Via back-pump data analysis:
 - superdiffusive transport behaviour of excited e^-
 - distinguished e^- dynamics in the individual heterostructure constituents

Y. Beyazit et al., PRL 125, 076803 (2020)

Au/Fe/MgO(001) thin films & tr-two-photon-photoemission



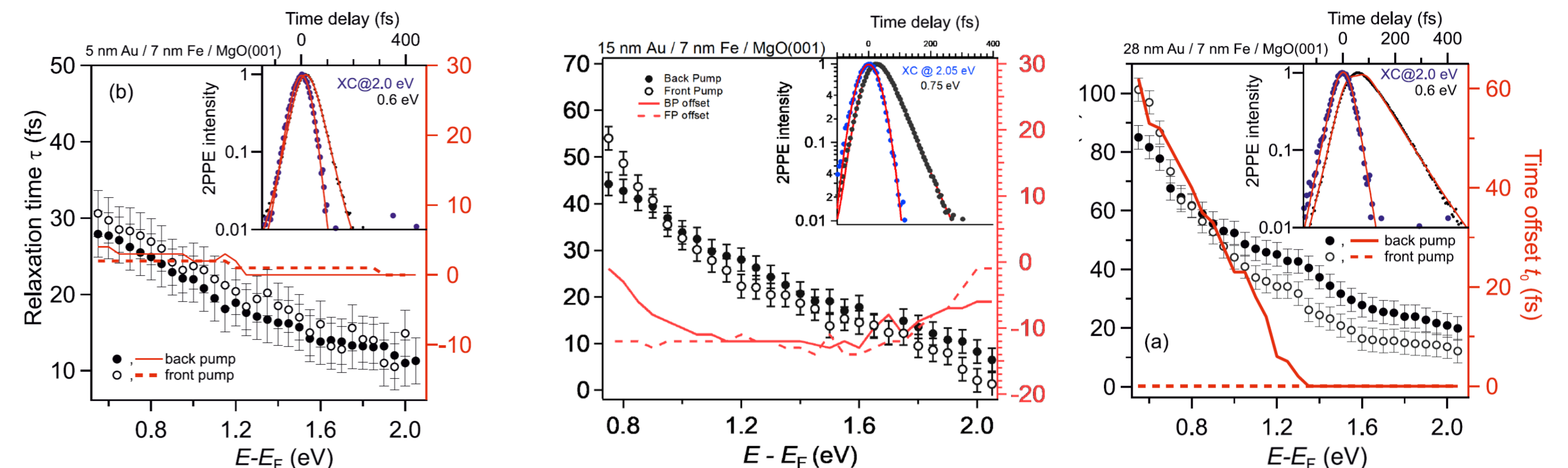
5-30 nm Au / 7-30 nm Fe / 0.5 mm MgO(001)



A. Menikov et al., PRL 107, 076601 (2011)

- epitaxially grown Fe-Au layer onto each other with different thickness combination
- femtosecond time-resolved two-photon-photoemission (tr-2PPE) is employed in a pump-probe scheme; sample excited by a **2 eV** pulse with an incident **weak** excitation fluence $F = 50 \mu\text{J}/\text{cm}^2$ and subsequently probed by a time delayed **4 eV** pulse. Photoemitted electrons were detected by a time-of-flight spectrometer (e-TOF)
- after finding spatial and temporal overlap of both beams on the sample, **time-zero** is determined by a Gaussian fit at the highest energy population curve \rightarrow **cross-correlation XC** = 75 fs
- compare obtained spectra for different film thickness to observe electron transport

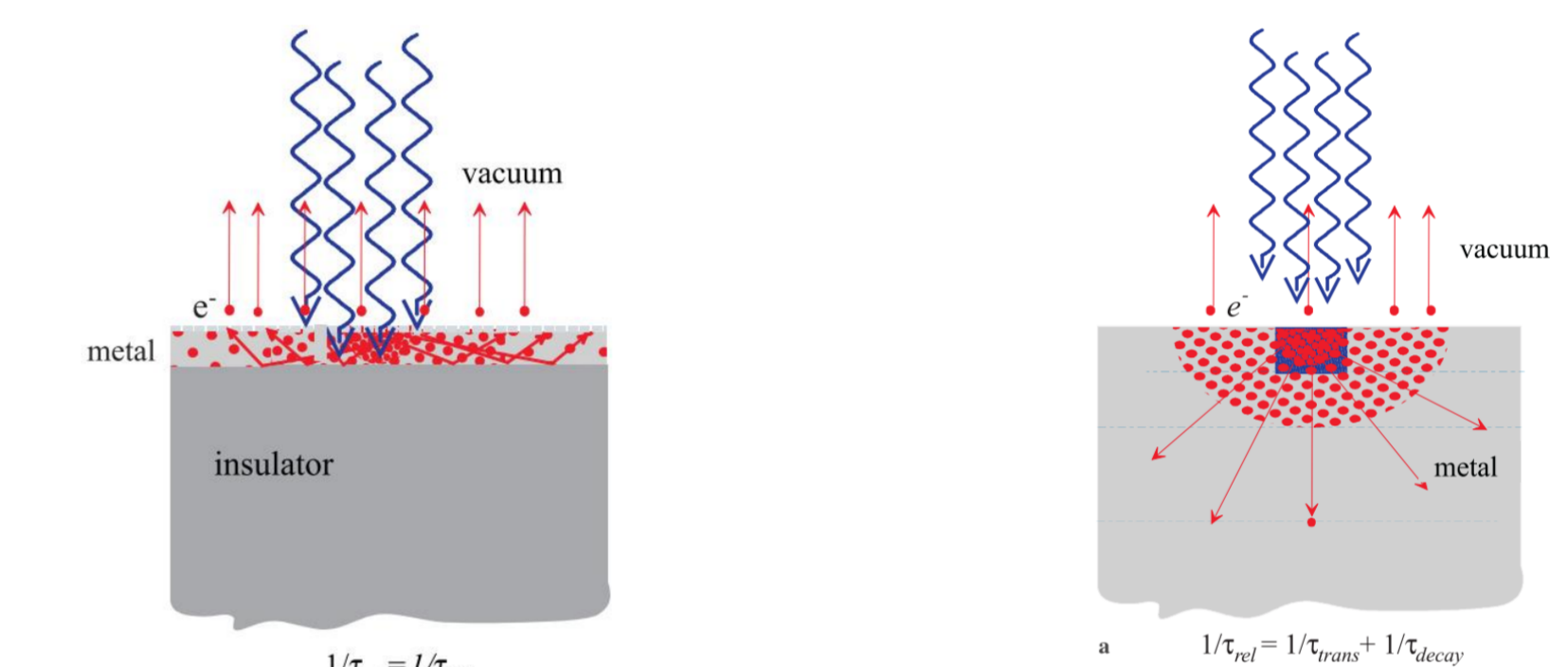
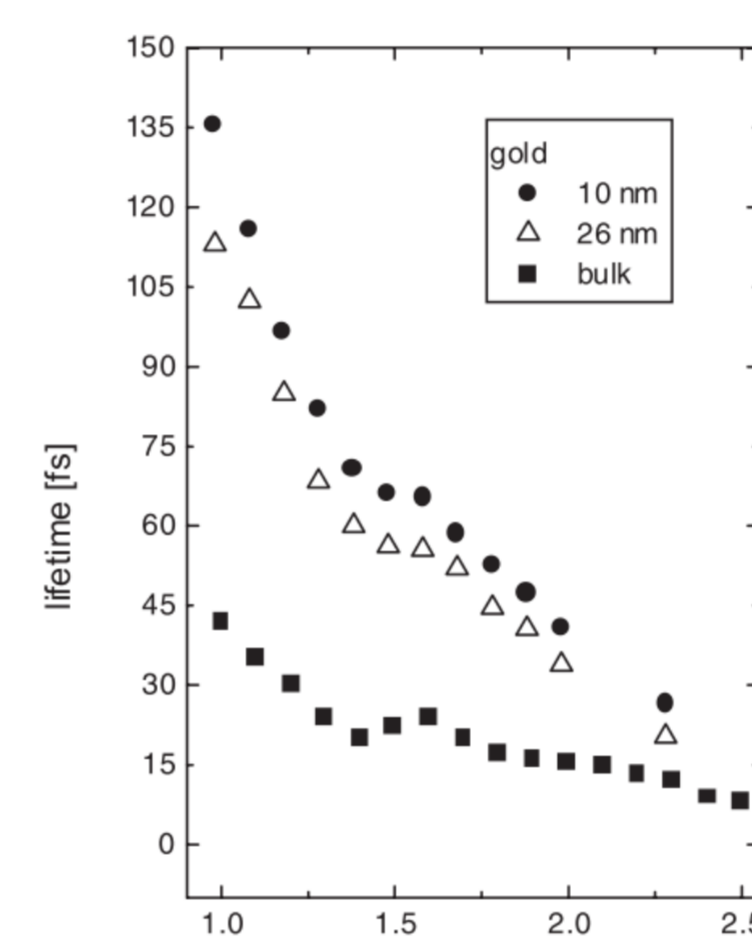
Relaxation dynamics τ_{FP} vs. τ_{BP}



- $\tau_{\text{FP}}(E - E_F) \approx \tau_{\text{BP}}(E - E_F)$
 - $E - E_F = 1 - 2 \text{ eV}$
 $\tau_{\text{FP}} \leq \tau_{\text{BP}}$
 - $E - E_F = 0.75 - 1 \text{ eV}$
 $\tau_{\text{FP}} \geq \tau_{\text{BP}}$
- $E - E_F = 1 - 2 \text{ eV}$
 $\tau_{\text{FP}} < \tau_{\text{BP}}$
- $E - E_F = 0.60 - 1 \text{ eV}$
 $\tau_{\text{FP}} > \tau_{\text{BP}}$

τ_{FP} vs. τ_{BP} thickness- and energy-dependent, why?

Optical penetration and transport effects

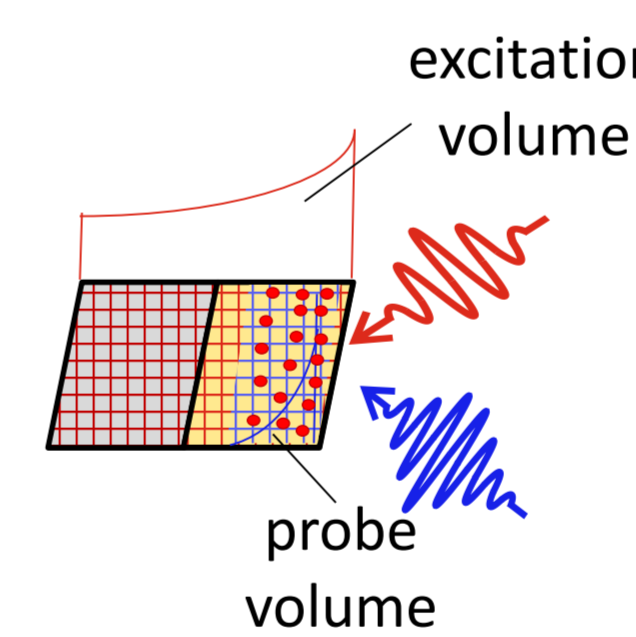


M. Aeschlimann et al., Appl. Phys. A 71, 485-491 (2000)

- τ decreases with increased sample thickness d
- population decay of hot e^- s near to surface due to **transport**
- d_{sample} vs. λ_{opt} important

thin films

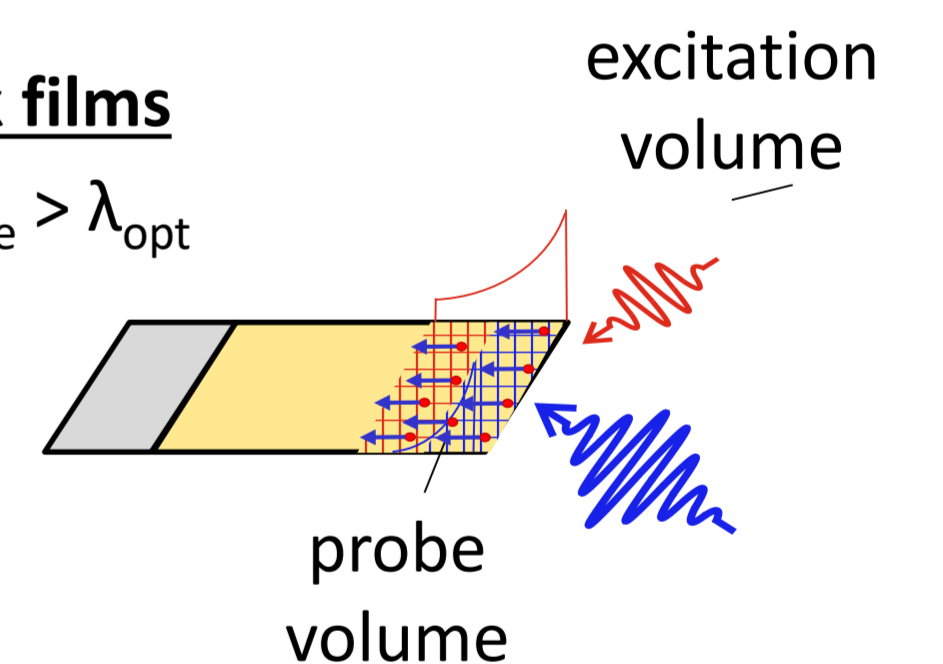
$$d_{\text{sample}} < \lambda_{\text{opt}}$$



no gradient $\nabla f(E) = 0 \rightarrow$ no transport

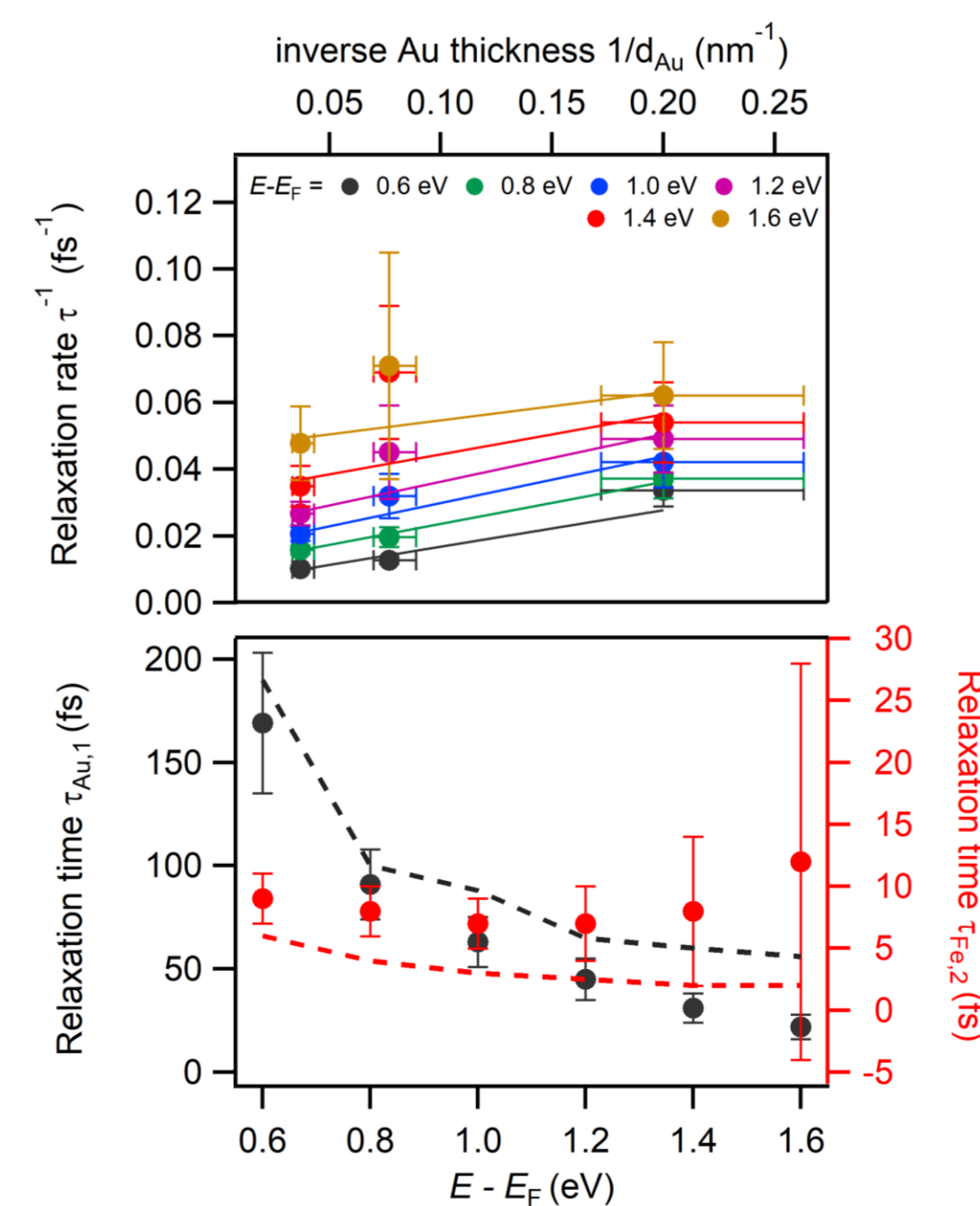
thick films

$$d_{\text{sample}} > \lambda_{\text{opt}}$$



gradient $\nabla f(E) \neq 0 \rightarrow$ transport

obtained with FP data



- front side pumping:
 - population decay of hot e^- s near Au surface region due to **transport** into bulk
 - Fe layer as **sink**; additional decay channel
- separation of e^- dynamics in individual constituents of the heterostructure **not clear**

Outlook

- FP measurements with **thicker d_{Au}**
- wedge sample: analysis of ballistically propagating e^- s

