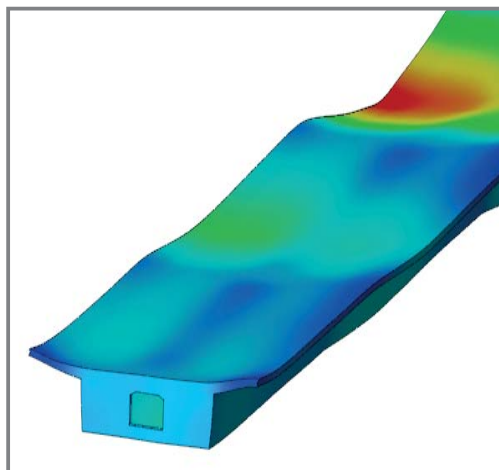
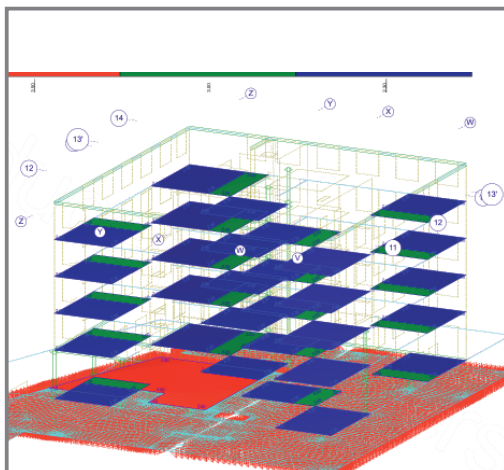
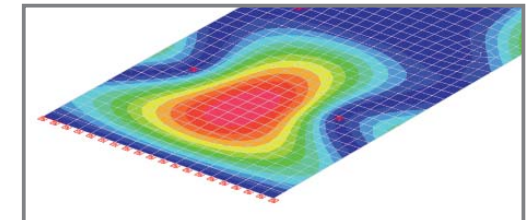
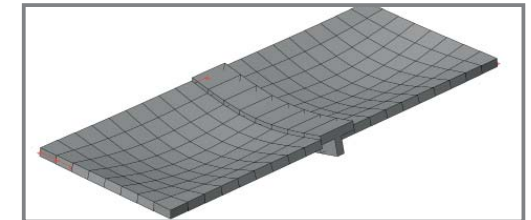
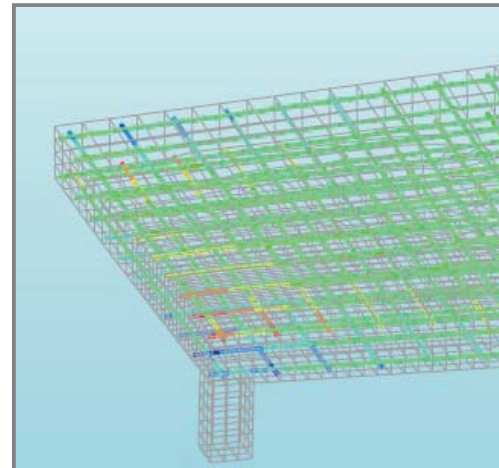
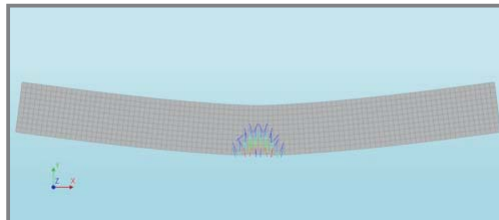
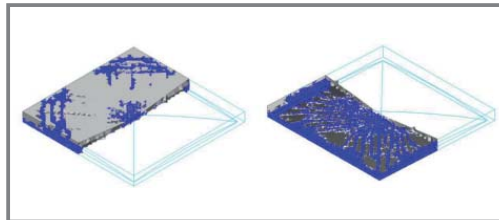
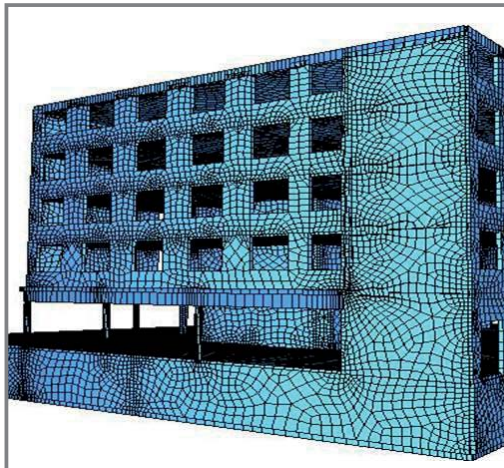


# Betonbau 5 –

## Finite-Elemente-Methode im Massivbau



### Themen:

- Theoretische Hintergründe der FEM
- Einführung in die linearen und nichtlinearen Berechnungsmethoden
- Besonderheiten bei der Berechnung von Bauwerken des Massivbaus
- Einführung in Building Information Modeling (BIM)
- Praktische Anwendung der theoretischen Kenntnisse mit Hilfe verschiedener Programme (InfoCAD, SOFiSTiK, Revit, DIANA)